

## SERIE W6

### Interflanged spring check valve

Art. W6.010: GG25 cast iron

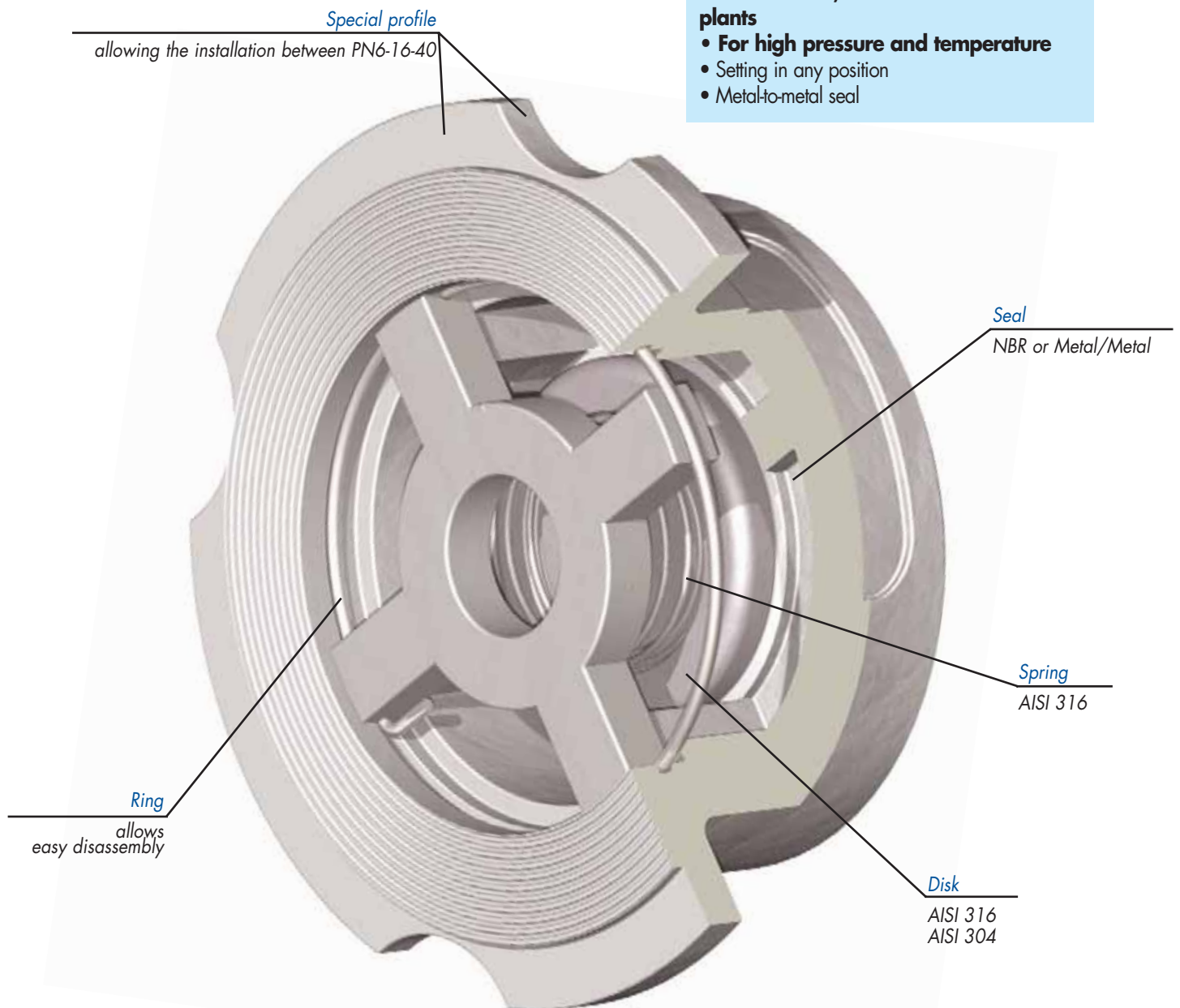
- For water processing and pumping installation, commercial heating/ventilation
- For industrial plants in general
- Setting in any position
- Rubber seal

Art. W6.626: AISI 316

Art. W6.416: WCB

- For chemical, foodstuff and steam plants
- For high pressure and temperature
- Setting in any position
- Metal-to-metal seal

check valves



Face to face: EN 558 serie 49 (ex DIN3202 K4)

# SERIE W6

## Interflanged spring check valve

Face to face: DIN 3202  
ISO 5752

### articles available

#### Art. W6.0

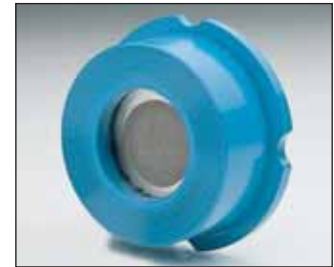
body:

GG25 Cast iron

- Pressure from 0 to 16 bar
- Temperature from -10 to +100°C

#### **W6.010**

- Disk: AISI 304
- Seal: NBR/Nitrile



#### Art. W6.6

body:

AISI 316

- Pressure from 0 to 40 bar
- Temperature from -10 to +350°C\*

#### **W6.626**

- Disk: AISI 316
- Seal: Metal/Metal



#### Art. W6.4

body:

carbon steel

- Pressure from 0 to 40 bar
- Temperature from -10 to +350°C\*

#### **W6.416**

- Disk: AISI 304
- Seal: Metal/Metal

\* See pressure temperature curve

### technical data

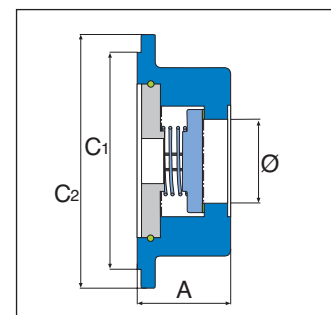
#### Dimensions (in mm)

DN	15	20	25	32	40	50	65	80	100
Ø	15	20	25	32	33	43	58	70	91
A	17	20	23	28	32	40	46	50	60
C1	43	53	63	72	85	95	115	132	152
C2	50	60	70	81	91	106	126	141	167

Face to face: DIN 3202 - ISO 5752

#### Weight

Kg	0,18	0,2	0,25	0,5	0,77	1,55	1,8	2,8	3,6
----	------	-----	------	-----	------	------	-----	-----	-----



Data and specifications are only available as information.  
Brandoni S.p.A. reserves the right to modify one or more valve specifications without warning.