

07系列

球止阀

Ball check valve



DOWNLOAD
DATASHEET



b-Smart, Be-Brandoni



brandoni
VALVES

www.brandonivalves.com

球止阀 / Ball check valve

07系列球止阀阀体材质为球铁，严格按照相关产品标准生产，符合EN ISO 9001标准。

主要分为两种形式：DN50-250法兰连接，DN25-80螺纹连接。

适用于污水系统、工业及农业系统，可用于粘稠液体。

(请确保您的选择与适用范围一致)

YES: 可垂直（按建议）或水平安装。

全通径、低水头损失、带有自我清洁功能。清洁或更换球体时只需将阀盖拆下，无需将阀门从管路上拆卸。

NO: 不适合蒸汽或燃气系统使用。

附件

- 备用球
- 备用密封圈

The valves in series 07 are ball check valves made of ductile iron, and are manufactured in accordance with the most severe product norms, and in conformity with the quality requirements of EN ISO 9001.

They are available in a flanged version, from DN50 to DN250, and in a threaded version, from DN25 to DN80.

They are suitable for waste water, industrial applications, agricultural purposes, for viscous e dense liquids.

(Please ensure the choice of the corresponding item)

YES: for installing in a vertical (recommended) and horizontal position.

Full bore, low head losses, self-cleaning. Removable bonnet for cleaning or changing the ball without removing the valve from the pipeline.

NO: for steam and gas..

Accessories

- Spare ball
- Spare seals

认证 / Certifications



结构及检测标准:

结构长标准: EN558-1 ISO 5752

法兰标准: EN 1092 ISO 7005

螺纹标准: ISO228-1

设计标准: EN12516, EN12334

标识标准: EN19

检测标准: EN 12266

Design and testing standards (correspondences):

Face-to-face: EN558-1 ISO 5752

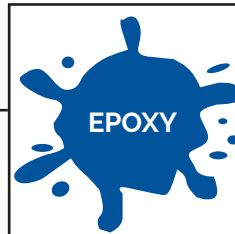
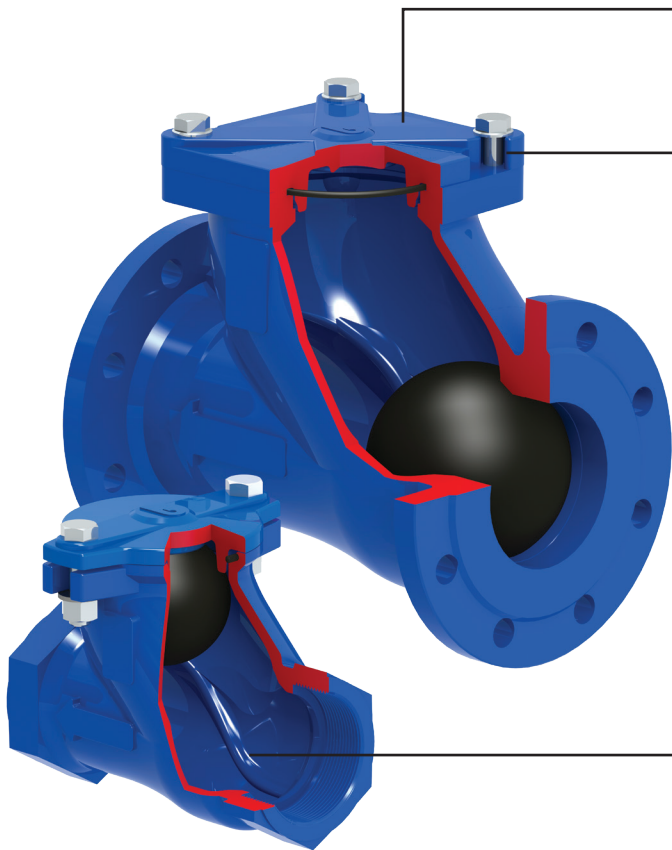
Flanges: EN 1092 ISO 7005

Threading: ISO228-1

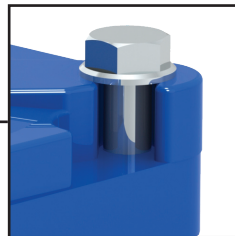
Design: EN12516, EN12334

Marking: EN19

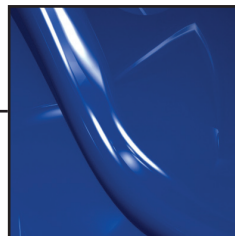
Testing: 100% testing in accordance with EN 12266



内外环氧树脂喷涂。
Internal and external epoxy coating.



阀盖的设计便于维护。DN80及以上尺寸的阀门无需旋下固定螺栓即可取下阀盖。
The cover enables easy maintenance. For DN 80, and above, the shape of the cover allows this to be dismantled without removing the fixing screws.



阀体内导轨引导球走向，以减少球体损伤及噪音。
The ribs guide the ball, reducing erosion and noises

球止阀 / Ball check valve

F7法兰式 Flanged



F7.100

法兰式
阀体: EN GJS 400-15
胶球: NBR包胶
可拆卸阀盖
工作温度: -10 + 70°C

Flanged
Body: ductile iron
Ball: NBR coated
Removable bonnet for maintenance
Temp: -10 +70°C

T7螺纹式F/F Threaded F/F

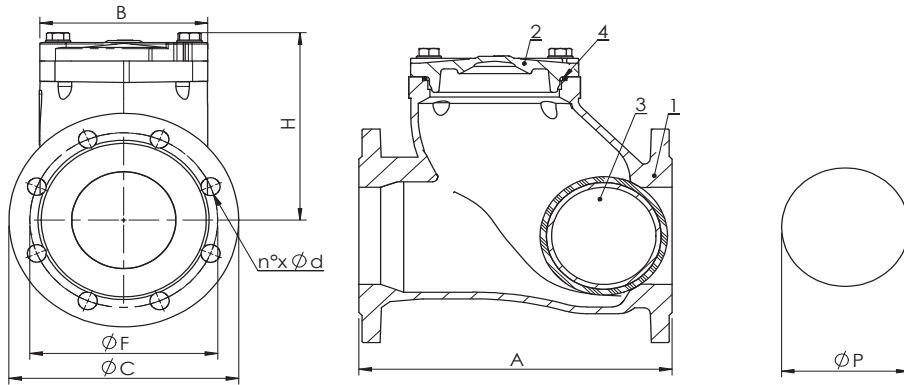


T7.100

螺纹式F/F
阀体: EN GJS 400-15
胶球: NBR包胶
可拆卸阀盖
工作温度: -10 + 70°C

Threaded F/F
Body: ductile iron
Ball: NBR coated
Removable bonnet for maintenance
Temp: -10 +70°C

F7.100

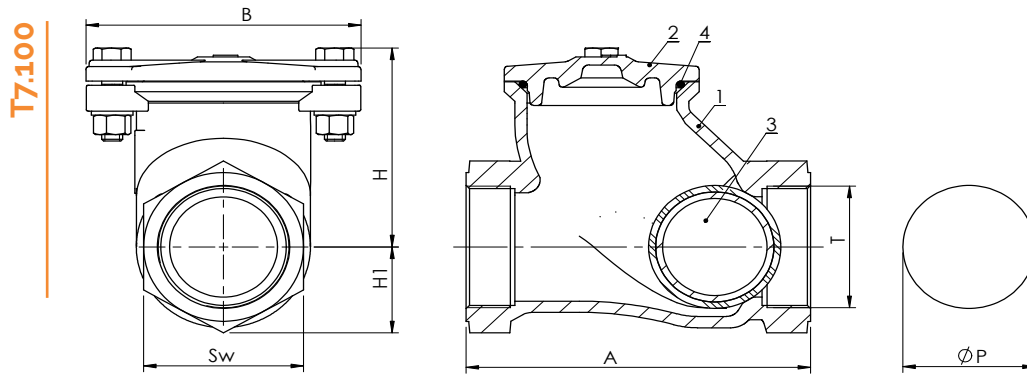


尺寸 (mm) / Dimensions (mm)

DN		50	65	80	100	125	150	200	250	300	350	400	500
A F7	EN 558/1 - 48°	200	240	260	300	350	400	500	600	700	800	900	1150
H		103	124	155	193	213	249	319	379	480	617	680	900
B		128	158	135	161	200	240	310	406	-	-	-	-
C		165	185	200	220	250	285	340	395	450	505	565	670
F		125	145	160	180	200	240	295	350	400	460	515	620
法兰 / Flanges	EN 1092/2	PN10/16	PN10/16	PN10/16	PN10/16	PN10/16	PN10/16	PN10	PN10	PN10	PN10	PN10	PN10
n x d		4 x 18	4 x 18	8 x 18	8 x 18	8 x 18	8 x 22	8 x 22	12 x 22	12 x 23	16 x 23	16 x 27	20 x 27
P		62,5	76	96	122	150	180	240	310	-	-	-	-

重量 (kg) / Weight (kg)

F7		7,9	11,9	16,3	22,3	28,1	48,4	88,4	156,2	230	350	440	840
----	--	-----	------	------	------	------	------	------	-------	-----	-----	-----	-----



尺寸 (mm) / Dimensions (mm)

DN		25	32	40	50	65	80
A1 T7	非标准/not standardized	118	135	138	166	198	236
H		70	80	84	103	124	155
H1		28	32	36	42	53	67
B		101	107	109	128	158	135
T	ISO 228-1	1"	1 1/4"	1 1/2"	2"	2 1/2"	3"
Sw		48	55	62	73	92	115
P		41	58	51	62.5	76	96

重量 (kg) / Weight (kg)

T7		1.5	1.8	2.1	3.4	5.9	10.7
----	--	-----	-----	-----	-----	-----	------

胶球尺寸及重量 (mm - kg) / Ball dimensions and weight (mm - kg)

DN	25	34	40	50	65	80	100	125	150	200	250	300	350	400	500
P	41	58	51	62.5	76	96	122	150	180	240	310	700	800	900	1150
重量/Weight kg	0.048	0.078	0.093	0.2	0.37	0.75	1.57	2.97	5.11	12.33	26.26	41	41	41	41

材质 / Materials

	组件 - Component	材质 - Material
1	阀体 - Body	EN GJS 400-15
2	阀盖 - Bonnet	EN GJS 400-15
3	胶球 DN25-250 - Ball DN25-250	碳钢 - Metal + NBR
4	O型圈 - O-ring	NBR
5	螺栓 - Bolts	AISI304

最大工作压力 / Maximum pressure

介质* - Fluids*	
危险性气体 - Hazardous gases	NO
非危险性气体 - Non-hazardous gases	NO
危险性液体 - Hazardous liquids	NO
非危险性液体 - Non-hazardous liquids	16 bar DN 25-150 10 bar DN 200-500
水** - Water**	16 bar DN 25-150 10 bar DN 200-500

* 危险性气体、液体的认证以2014/68/EU e 1272/2008 (CLP) 标准为准。

** 是指供水和排水系统的水 (PED 2014/68/EU 1.12b)

* hazardous gas, liquids acc. 2014/68/EU e 1272/2008 (CLP)

** For supply, distribution and discharge of water (PED 2014/68/EU 1.12b)

工作温度 / Temperature (°C)

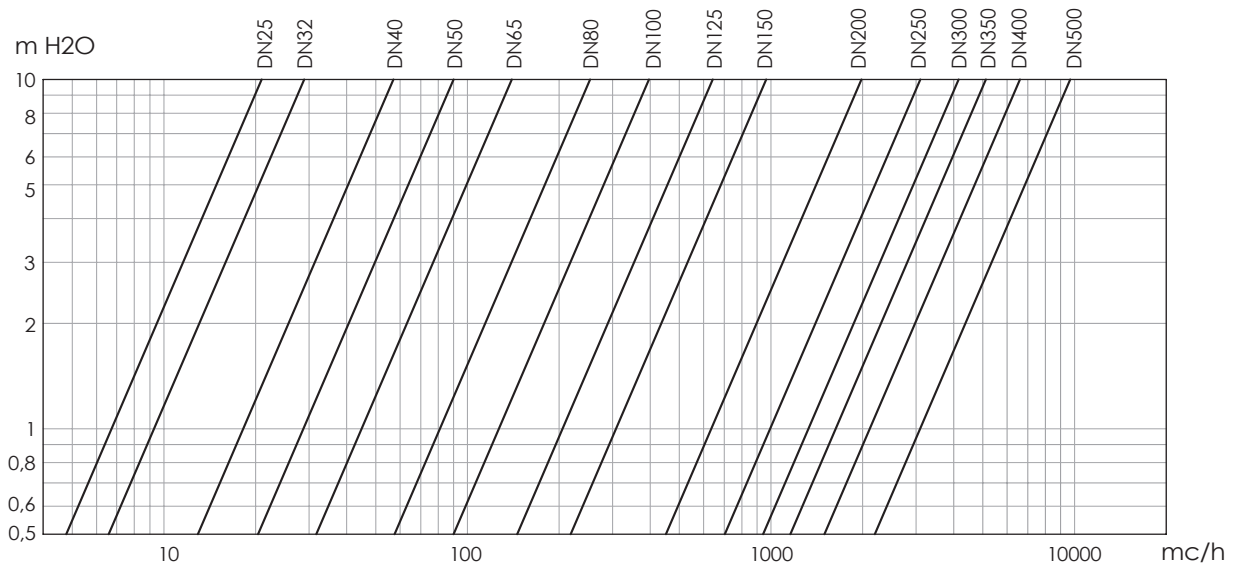
温度 - Temperature	最低 - Min	最高 - Max
NBR	-10	70

最小工作压力 / Minimum pressure

0,2 bar

最小背压 / Minimum counterpressure

0,5 bar

水头损失 介质：水 (1m H₂O = 0,098bar)Head loss Fluid: water (1m H₂O = 0,098bar)

Kv - DN表 / Kv-DN chart

DN	25	32	40	50	65	80	100	125	150	200	250	300	350	400	500
Kv	21	29	57	90	140	253	396	642	962	1'990	3'100	4'150	5'100	6'600	9'700

07系列说明及建议

储存

请保存在密闭干燥的环境中。

维护

- 从管路上卸下阀门
 - 卸下阀盖处螺栓（如图1中NO.5所示）。
 - 取下阀盖（如图1中NO.2所示）。
 - 取出O型圈（如图1中NO.4所示）。
 - 取出胶球（如图1中NO.3所示）。
- 取大口径胶球时，请将阀体（如图1中NO.1所示）倾斜90度。

Instructions and Recommendations for series 07

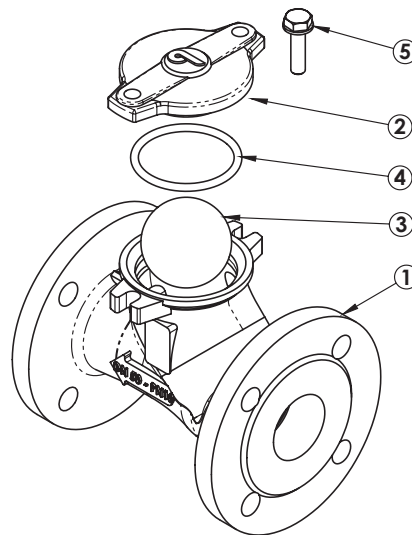
STORING

Keep in a closed and dry place.

MAINTENANCE

- Remove the valve from the line
 - Remove the screws from the cover (fig. 1 n°5)
 - Remove the cover (fig. 1 n°2)
 - Take out the O-ring (fig. 1 n°4)
 - Remove the ball (fig. 1 n°3).
- For bigger sizes, turn the body (Fig.1 n°1) by 90°, to remove the ball

图1/FIG. 1



建议

阀门进行任何维修或拆卸前，请确保：

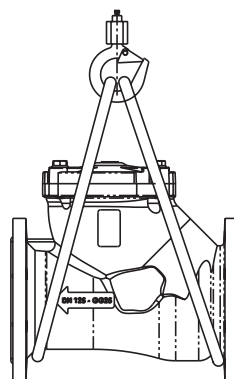
- 管路中的流体已冷却。
 - 管路中的压力已卸去。有毒、易燃、有腐蚀性的流体已排净。
- 50°C以上及0°C以下的流体可能会对人体造成伤害。

RECOMMENDATIONS

Before carrying out maintenance or dismantling the valve:

- be sure that the pipes, valves and fluids have cooled down,
 - decrease the pressure and drain the lines and pipes in case of toxic, corrosive, inflammable or caustic liquids.
- Temperatures above 50°C and below 0°C might cause damage to people.

图2/FIG. 2



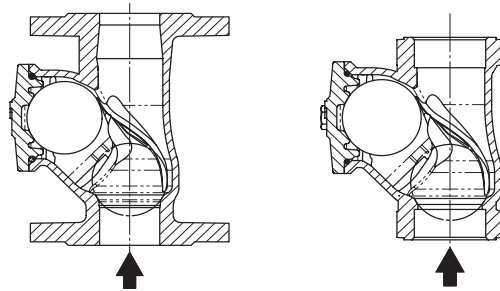
安装

- 小心装卸。
 - 将阀门放置在管路法兰之间，并在中间对正放置密封垫圈。检查密封是否正确放置。对接法兰间距离与阀门结构长相同。不能用螺栓将阀门与管路法兰强行拉近，螺栓需交叉拧紧。
 - 不能在阀门与法兰连接好后，再去将法兰与管路焊接。
 - 水锤作用会导致阀门损坏或破裂。倾斜、扭转、阀门管路中心线与管路未对准会使阀门受力。
- 建议安装弹性接头等来尽量减少管路的震荡。
- 利用吊带和安全吊钩移动或吊装阀门（如图2所示）。

注意：此阀门为单向阀，请按阀体上箭头提示的介质流向安装阀门。

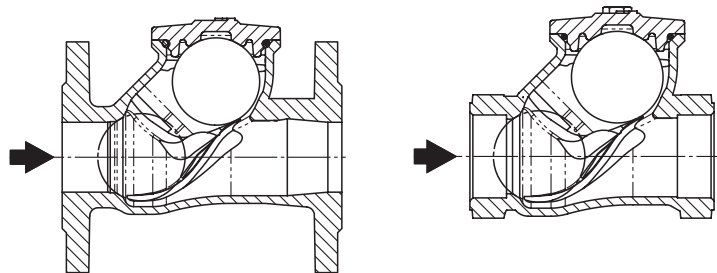
当介质垂直向上流动时：请按照图3所示安装。

图3/FIG. 3



当介质水平或倾斜流动时：请按照图4所示安装。

图4/FIG. 4



处置

对于输送危险介质（有毒、腐蚀性……）的阀门，如果阀门中可能残留残余物，请采取适当的安全预防措施并进行必要的清洁。负责人员必须经过培训并配备适当的防护装置。在处置之前，请按照不同材料拆卸阀门并分离组件。请参考产品资料获取更多信息。根据当地和现行有效的法规并在考虑环境的情况下，将分类的物料送交回收利用（例如金属材料）或进行处置。

INSTALLATION

- Handle with care.
- Place the valve between the flanges of the pipe and install the seal between the pipe and valve flanges. Check that the seals have been positioned correctly. The distance between the counter flanges must be the equal to the valve's face to face distance. Do not use bolts of the counter flanges to bring the piping close to the valve. The bolts should be cross tightened.
- Do not weld the flanges to the piping after installing the valve.
- Water hammers might cause damage and ruptures. Inclination, torsions and misalignments of the piping may subject the installed valve to excessive stresses. It is recommended that elastic joints be used in order to reduce such effects as much as possible.
- Use belts and safety hooks for harnessing and lifting (fig.2).

NOTE. This valve is unidirectional: install in accordance with the flow direction arrow indicated on the body.

Piping with vertical upstream flow: install the valve as shown in figure 3.

Pipes with horizontal or inclined flow (with ascending flow):
Install the valve like picture #4.

DISPOSAL

For valve operating with hazardous media (toxic, corrosive...), if there is a possibility of residue remaining in the valve, take due safety precaution and carry out required cleaning operation. Personnel in charge must be trained and equipped with appropriate protection devices. Prior to disposal, disassemble the valve and separate the component according to various materials. Please refer to product literature for more information. Forward sorted material to recycling (e.g. metallic materials) or disposal, according to local and currently valid legislation and under consideration of the environment.